

# Coop <sup>The</sup> Scoop

1st Quarter, 2022



*Cooper Marine and Timberlands discharges cargo at the Port of Corpus Christi, TX*



**02** Corpus Christi Expansion  
CMT



**03** Green Wave Delivered  
Blakeley BoatWorks



**04** Seago Lumber Acquired  
CMT



**06** CP&O, Ceres Merge  
CP&O



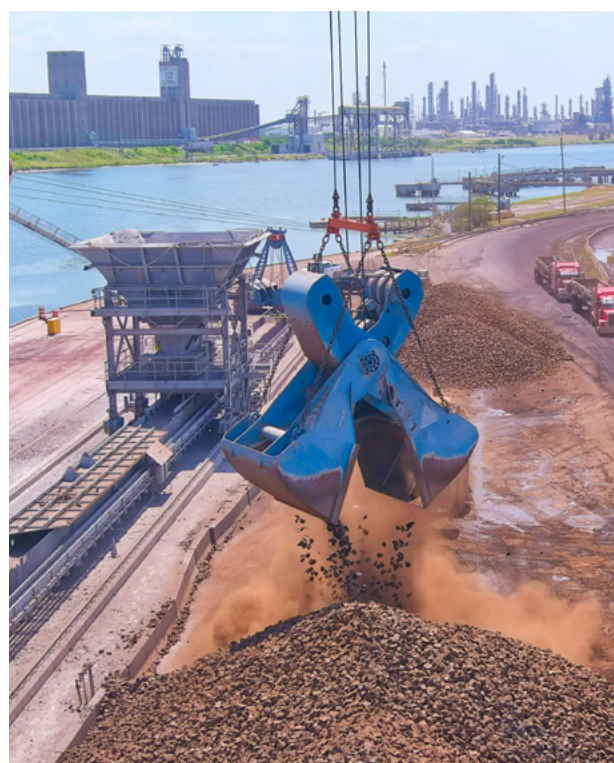
the COOPER GROUP of companies



## CMT Expands to Corpus Christi

Cooper Marine & Timberlands (CMT) is pleased to announce the expansion of its bulk stevedoring operations to the Port of Corpus Christi, Texas. Initial cargo handling operations began in the fall of 2021 and have now begun in earnest. CMT's expansion into the Port of Corpus Christi best allows the CMT team to serve the growing needs of its current and future clients in the state of Texas.

“For 117 years, our family has aligned our company’s continued expansion with the growing needs of our customers,” said Angus R. Cooper III, President, Cooper/T. Smith. “Our expansion into the Port of Corpus Christi is a continuation of our centuries-old promise to fully satisfy our customers’ needs and exceed their expectations, wherever in the world that may take us.”



Utilizing the port’s Bulk Dock 1 terminal, CMT is capable of discharging coal, iron ores and other dry bulk commodities to and from ocean going vessels, inland barges, railcars, and/or trucks. The terminal may also be used to load ocean going vessels when special handling is required or on-premises temporary cargo storage is required. The terminal is equipped with a gantry-mounted Liebherr LHM 550 crane for the efficient handling of a wide variety of cargo. Bulk Dock 1 features a 38-foot draft capable of receiving Panamax vessels and is served by three Class 1 railroads (BNSF, Kansas City Southern, and Union Pacific), a short line operated by Genesee and Wyoming, Inc., and is located adjacent to connecting highways Interstate 37 and Highway 181.

“There is no distance that our team won’t go in order to meet the growing needs of our customers,” said James Fowler, Managing Director for Marine and Stevedoring Operations, Cooper Marine & Timberlands. “Our stevedoring team is comprised of the industry’s most experienced and dynamic team and we’re excited to expand our customer-centric bulk cargo handling services to the great state of Texas and Port of Corpus Christi.”

Cooper Marine & Timberlands has worked relentlessly to exceed the expectations and needs of its customers, and in doing so has become one of the largest and most experienced stevedoring and inland marine towing service providers in the United States. Building on more than a century of experience, CMT stands ready to fulfill its mission of ensuring the highest standards of excellence, expertise, and responsiveness for its customers by employing superior equipment, extensive experience, and action-oriented people. •



Watch 

## Blakeley BoatWorks Delivers *Green Wave* to Plimsoll



In December 2021 Blakeley BoatWorks successfully completed construction of M/V *Green Wave*, a fully compliant, state-of-the-art Subchapter M inland push boat. Owned by Plimsoll Marine, the vessel will operate within the Cooper Consolidated fleet footprint, the largest fleet footprint on the Lower Mississippi River. All three companies are part of the Cooper Group of Companies.

Designed by Farrell and Norton and built by Blakeley BoatWorks over the course of a year, the 70-foot long, 28-foot wide, 1,600 horsepower vessel is fully compliant with the latest United States Coast Guard regulatory requirements.

“Our team is proud to be part of the construction of the *Green Wave*,” said Swathin Kannalath, Managing Director of Blakeley BoatWorks. “Our customers expect their new vessels to meet the industry’s highest levels of compliance and we certainly met those high expectations with the delivery of *Green Wave*.”

Blakeley BoatWorks is one of the Gulf Coast’s leading shipbuilding and vessel repair facilities. Facilities include a floating dry dock, four working bays, and carpenter, electrical and maintenance shops. The working bays sit on a 26-acre campus and have 10-ton overhead cranes. Blakeley’s 600-metric-ton travel lift is capable of lifting and moving vessels 40-feet-wide and 200-feet in length.

“We’re proud of the work Blakeley BoatWorks has done and have high expectations for the *Green Wave* as it begins service in the Plimsoll fleet,” said Karl Gonzales, Vice President of Plimsoll Marine. “Our customers and employees now have the added satisfaction, pride, and peace of mind knowing that our fleet is home to one of the industry’s safest and most capable vessels.”

### ***Green Wave* Specs**

The towboat is powered by two (2) Caterpillar C32 800 HP Tier 3 diesel marine engines and coupled to two (2) Twin Disc MGX5222 gears. Electrical power is supplied with two (2) Caterpillar C4.4 Tier 3 generators.

A pair of Southeastern Propeller 70” four-blade stainless steel propellers provide thrust through two (2) J & S Machine Works, Inc. 7” ABS Grade two propeller shafts with Thordon shaft bearings, Thordon rudder bearings, and Kemel shaft seals. Hydra Force, LLC supplied the steering system for the two (2) 7” main and four (4) 7” flanking rudders.

Hydra Force, LLC provided a pair of Quincy reciprocating air compressors, with ventilation fans provided by Donovan Marine. Schuyler Maritime, LLC supplied varying sizes of rubber fendering around the perimeter of the vessel and push knees.

Stone Construction provided a Mitsubishi split duct HVAC system in all interior spaces with Blakeley BoatWorks providing all custom woodwork and interior finishes. Bozant supplied rubber-framed windows and Donovan Marine supplied a pair of Patterson 40-ton deck winches. Blakeley BoatWorks installed all electronics, communications, and an alarm system.

The towboat has a capacity of 22,000 gallons of fuel and 5,200 gallons of fresh water. The vessel is outfitted with (4) crew staterooms housing 7 crewmen, 3 baths and a full galley arrangement. •



## CMT Acquires Seago Lumber Co.

Cooper Marine & Timberlands (CMT) is excited to announce the acquisition of Seago Lumber Company. Seago Lumber Company, owned and operated by the Seago family since 1948, produces 1-inch dressed boards for sale in both domestic and export markets, and is known in the industry for its superior lumber quality and customer satisfaction.

“Today, we’re excited to welcome the Seago Lumber team into the Cooper family,” said Angus R. Cooper III, President of Cooper Marine & Timberlands. “The addition of Seago Lumber greatly enhances Cooper Marine & Timberlands’ ability to meet growing customer demand and provide the industry’s highest standard of lumber products and customer service.”



For over 70 years and spanning 5 generations of the Seago family, Seago Lumber has been a leading manufacturer in the lumber industry, as well as a primary employer of personnel throughout southern Mississippi.

“Our focus has always been to produce the highest quality lumber products for our customers. We’re excited to become a member of the Cooper team, and are confident in the continued commitment to our employees and client base,” said D.G. Seago, President and owner of Seago Lumber.

CMT’s forestry footprint expands across the southeastern United States and consists of saw mill, chip mill, wood yard, procurement, in-woods chipping, and logging operations. CMT’s pine sawmill located in Carrollton, Alabama, specializes in producing 1-inch rough-cut lumber for domestic and export markets. Cooper Marine and Timberlands is a wholly-owned subsidiary of Cooper/T. Smith, one of America’s oldest and largest forestry and maritime firms.

“CMT welcomes the Seago Lumber team to the Cooper family,” said Jason Anderson, Managing Director of Timber Operations, Cooper Marine & Timberlands. “Seago Lumber will play an important role as we continue to diversify CMT’s product line to now include both rough and dressed boards in the domestic and export lumber markets.”

The acquisition was finalized in January 2022. Learn more at [www.cooperlumber.com](http://www.cooperlumber.com). •

## New CMT Barge Launched



The last of Cooper Marine and Timberlands’ new barges was launched and delivered in January. Built by Arcosa in Caruthersville, Missouri, this order consisted of 25 new covered barges, with the first delivered in November 2021. John Stokes, CMT’s Senior Vice President of Marine Operations, was on hand at Arcosa’s facility to launch this latest barge onto the river. Over the past two years, Arcosa has built a total of 45 new barges for Cooper Marine and Timberlands, strengthening the company’s fleet to more than 421 barges. •

# Mooring Boat Honors Wayne Wallace

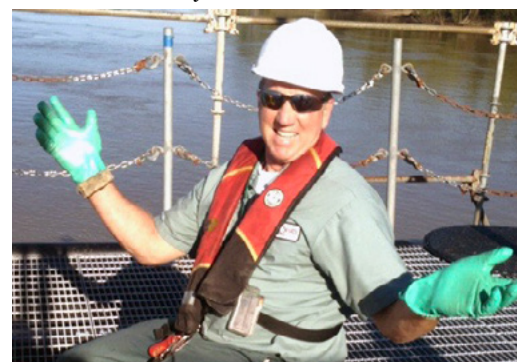
Cooper/T. Smith Mooring’s Wayne Wallace passed away in September 2021, and is deeply missed by all of his peers. To honor Wayne’s legacy, CTS Mooring recently named its newest boat after him, the *Capt. Wayne Wallace*. Wayne’s family was onboard for the boat’s first voyage.

Wayne was well liked among his peers, always selfless and dedicated to his profession. The same way he served us, he served our country as a soldier and brought that same willingness to help others wherever he went. To many within the company he was like a brother; always there with a smile to help where needed, never asking for anything in return. We are all truly blessed to have known Wayne and our love and respect for him will be his legacy. •



*Pictured left: Lori Wallace (wife), Katie Galiano (daughter), Ian Wallace (son), Adam Galiano (son-in-law), Laynie Galiano (granddaughter), Eddie Wallace (brother), Holly Wallace (sister-in-law), Oliver Wallace (nephew)*

*Pictured below: Wayne Wallace*



> CP&O

# VMA Port Day

In February, George Brown, CEO, CP&O, and Jim Ford, Senior Vice President of Operations, CP&O, visited Richmond, Virginia, as part of the Virginia Maritime Association’s (VMA) annual Port Day. VMA members hosted a reception for government officials and then spent the day visiting Virginia’s delegates and senators to discuss topics and budget items vital to the success of the Port of Virginia. Among the topics discussed were the optimization of Norfolk International Terminal’s North berth, expansion of the Virginia Business Ready Sites Program, funding for the International Trade Plan for the Commonwealth of Virginia, and offshore wind supply chain development grants that would help small and medium-sized businesses enter the offshore wind industry. •



*Scott Rhodes, Virginia International Terminals; Delegate Anne Ferrell Tata; Jim Ford; Raymond Newlon, Virginia Maritime Association*



*Jim Ford; Governor Glenn Youngkin; George Brown*



*George Brown with Virginia Secretary of Transportation Sheppard Miller, III*



## CP&O Joins Forces with Ceres in Virginia

CP&O, LLC and Ceres Marine Terminals, Inc. have consolidated their stevedoring services under the CP&O brand to further increase efficiency at the Port of Virginia. The new venture will combine two experienced organizations under one umbrella, providing opportunity for growth and efficiency, especially in light of the tremendous increase in demand for services to support the Port of Virginia, the nation's most advanced port complex.

“The Port of Virginia has provided best-in-class service in 2021 and has been rewarded by our customers with 25% year-over-year growth,” said Stephen Edwards, Virginia Port Authority CEO and Executive Director. “As we move into 2022, we will further improve and this new venture will help us turn more ships faster and move more cargo. Our steamship line customers will be provided an excellent choice for their stevedoring services from either CP&O or Virginia International Terminals.”



Effective March 2, 2022, CP&O, LLC has entered into a new 10-year Stevedore License Agreement with the Virginia Port Authority to provide container stevedoring services at Virginia International Gateway and Norfolk International Terminal. Under this Agreement customers at the Port shall have the choice of using CP&O or Virginia International Terminals. The new venture will be led by George Brown, current President of CP&O.

“The addition of Ceres Marine Terminals, Inc. as a member of CP&O will provide significant benefits to the Port of Virginia, including improved services and higher efficiency and improved equipment utilization to the benefit of our customers,” said George Brown, President of CP&O.

CP&O offers a diverse portfolio of stevedoring services, including container, break bulk, ro-ro, baggage handling, project cargo, and ship provisions.

“The combination of CP&O’s and Ceres’ experience and resources will further CP&O’s mission to safely and efficiently serve our customers, all while strengthening the Port of Virginia’s position as one of the leading container ports in the U.S.,” said Brown. •



Cooper/T. Smith Mooring



## Mooring’s Gary Marino Retires

Long-time Cooper/T. Smith Mooring employee Gary Marino is set to retire in April. Gary is the founding member of the Mooring safety committee, which began in 2000, and he served as head of the committee from 2000 to 2021. His commitment to safety is unprecedented in our group and his dedication has placed our safety culture where it is today. Gary fully committed himself to the safety of our group and his efforts and accomplishments will be his legacy at CTS Mooring. A true testament to dedication is when you do the right thing while no one is looking. Well, Gary did one better. When a safety issue would arise that he thought was important for him to be a part of, he would volunteer to attend to the matter — even on his days off! Gary’s favorite line was, “I love my job,” and he truly meant it. We appreciate Gary’s commitment to our safety and are fortunate to have had him on our team. •

## We Are Cooper/T. Smith: Aaron Nix, CP&O

As a Lashing Boss for CP&O at the Port of Virginia, Aaron Nix and his team are responsible for securing shipping containers to cargo vessels that call on the port. •



> Cooper/Ports America

## Luncheon for C/PA and ILA Teams

To show its appreciation for all of their hard work, on February 18 Cooper/Ports America (C/PA) held a luncheon for all C/PA, ILA and PHA employees. The luncheon had a great turnout, feeding around 380 people with a BBQ sandwich, chips, and drink. C/PA has surpassed historic tonnage milestones and keeping cargo flowing through Port Houston's City Docks wouldn't be possible without the continued efforts of these valued employees. We thank them for their continued dedication. •



## Byrd Receives Safety Award

Cooper/Ports America's gear man Doug Byrd was named the recipient of the company's fourth quarter Safety Recognition Award. Doug spotted an unsafe act that could have caused serious injury. Because of his actions, no incidents occurred. •

*Pictured (l-r): Brandon Wright, Ed Klauke, Doug Byrd, Jesse Gomez, Gustavo Gutierrez*



# Alabama Power, Cooper/T. Smith Partner for Artificial Reef

Source: *Alabama News Center*

Decommissioned steam plant equipment from Alabama Power found a new lease on life as part of an artificial reef system in the Gulf of Mexico, helping to improve fish habitats in coastal waters.

On November 9, 2021, the Alabama Wildlife Federation (AWF) sunk retired package boilers secured aboard a decommissioned barge provided by Cooper/T. Smith (CTS). A Crescent Towing tugboat was on hand to assist with the transport and sinking of the barge.



“It was a big day,” said AWF Executive Director Tim Gothard. “This material was so big and so heavy you couldn’t deploy it off a traditional reef deployment vessel, so Cooper/T. Smith donated a 195-foot by 35-foot barge to give us the ability to put the Alabama Power Company equipment inside the barge, which increased the complexity of the reef from the standpoint of structure. That’s a good thing.”

The reef deployment represents the end of a nearly two-year project organized by AWF and the Marine Resources Division of the Alabama Department of Conservation and Natural Resources (ADCNR) to improve Alabama’s nearshore fishing habitats. Governor Kay Ivey and ADCNR selected AWF in 2019 to develop a plan to improve fishing habitats inside a 7.5-square-mile zone of ocean 8 miles south of Dauphin Island.

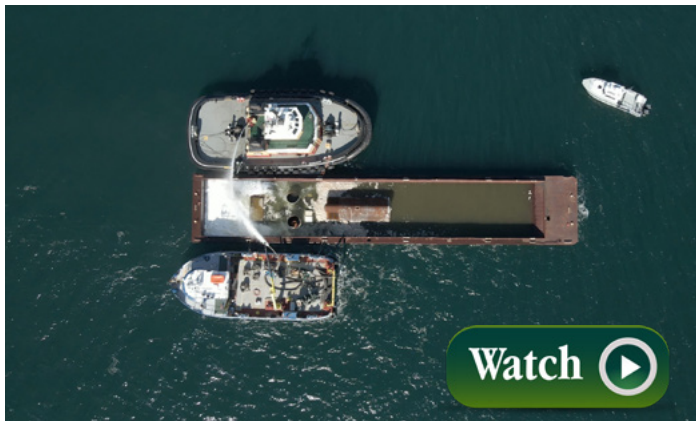
“This is part of an enormous plan to provide two key types of fisheries habitat: adult reef fish reefs and juvenile reef fish reefs,” Gothard said. “The water bottoms in the Gulf of Mexico – off of Alabama in particular – are relatively flat with no structure. By providing structure through artificial reefs, you provide habitat that can actually increase the productivity of the marine fishery within that zone.”

This deployment marks the third artificial reef Alabama Power has supported with retired equipment. The first was in 2016 when a pair of retired boilers were sunk aboard a decommissioned CTS barge about 25 miles south of the Sand Island Lighthouse. The artificial reef was found to be teeming with fish in early 2020.

“Alabama Power is very pleased to support the creation of our third artificial reef, in partnership with the Alabama Wildlife Federation, Alabama Department of Conservation and Natural Resources and Cooper/T. Smith,” said Alabama Power Environmental Affairs Vice President Susan Comensky. “These reefs sustainably repurpose retired boilers from our generating plants and create an ecosystem where aquatic species can thrive off the coast of Dauphin Island.”

Gothard said the cooperation between the public and private sectors not only contributed to the success of the project but is also why discussions about creating more artificial reefs are underway.

“It’s a testament to the people that are in these different organizations that are passionate about the outdoors,” Gothard said. “Without that, we wouldn’t be sitting here talking today about 29 reefs being deployed in a 14-month period. Partnerships are the critical aspect to success.” •



Watch 



## Grab-a-Line and Zero Awards



Zack Crouchet



Andrew Wahlen

Congratulations to Cooper/T. Smith Mooring employees Andrew Wahlen and Zack Crouchet, recipients of the company's 2021 Grab-a-Line Award and Zero Award, respectively.

CTS Mooring's Zero Award is awarded to an employee who goes above and beyond to ensure the safety of the entire team. This employee exhibits multiple approaches to safety and concentrates their efforts to improve the company's overall safety culture. Most importantly, the employee's efforts are done "while no one is watching," meaning they are entirely self-motivated. Zack is a long-time employee who has been confidently steady in his contributions to our team's safety. Congratulations, Zack!

The Grab-a-Line Award is named ironically since its recipient has actually "grabbed a line" the least out of anyone on the team. "Grab a Line" is an old adage for when a tugboat was not actively working and would, therefore, literally grab a line on a nearby station. The recipient of the Grab-a-Line Award is an employee who works hardest and performs more jobs than any other team member. Andrew is a repeat winner, who strived to break his previous record and ended up shattering it! Congratulations, Andrew! •

### > Plimsoll Marine

## Steel Skipper Delivered to Plimsoll

Master Marine, Inc. (MMI) has delivered the 67' x 28' M/V *Steel Skipper* to Plimsoll Marine. The *Steel Skipper* is the fourth vessel that MMI is scheduled to deliver to Plimsoll Marine, one of the Lower Mississippi River's premier push boat operators. These four state-of-the-art vessels are designed by Entech Designs, LLC and are fully compliant with all United States Coast Guard regulatory requirements.

"Plimsoll Marine strives to provide the Lower Mississippi River with premier push boat services utilizing the industry's most modern and capable fleet of vessels. The delivery of the *Steel Skipper* marks another milestone in that effort," said Angus R. Cooper III, President, Cooper/T. Smith. "Our ongoing investment in building and maintaining the Plimsoll fleet is a testament to our pledge to always return the highest level of value to our customers."



"Our customers expect the safest, most efficient, reliable operations, and Plimsoll Marine's world-class team and state-of-the-art vessels ensure we consistently exceed those expectations," said Karl Gonzales, Vice President of Plimsoll Marine. "Plimsoll is proud to add the *Steel Skipper* to our growing fleet of state-of-the-art push boats. Paired with our experienced mariners, this vessel further ensures our ability to exceed customer expectations in the safest and most efficient manner."

(continued)



## Steel Skipper Delivered to Plimsoll (cont'd)

### Steel Skipper Specs

The towboat is powered by two (2) Laborde Products, Inc. Mitsubishi 803 HP Tier III diesel marine engines operating at 1,400 RPM and coupled to Twin Disc 5321 gears. Laborde Products also supplied electrical power with two (2) Northern Lights 65KW Tier III electronic controlled generators with RW Fernstrum, Inc. keel coolers throughout.

A pair of Sound Propeller Services, Inc. 70" x 48" x 7" four-blade stainless steel propellers provide thrust through two (2) J & S Machine Works, Inc. 7" ABS Grade two propeller shafts with all Thordon Bearings, Thorplas bushings and shaft seals. RIO Controls and Hydraulic, Inc. supplied the steering system for the two (2) 7" main and four (4) 7" flanking rudders.

Gulf Coast Air & Hydraulics, Inc. provided a pair of Quincy reciprocating air compressors and ventilation fans. Schuyler Maritime, LLC supplied all 18" x 12" rubber fendering around the perimeter of the vessel and push knees.

R.S. Price & Son provided a Carrier mini-split HVAC system in all interior spaces with Blakeney Marine providing all custom woodwork and interior finishes. Donavon Marine supplied the large Bomar aluminum windows and Dales Welding and Fabricators, LLC provided the aluminum exterior doors. Wintech International, LLC supplied a pair of 40-ton deck winches and New World, Inc. provided all electronics and communications, with an alarm system from Unlimited Control & Supply, Inc.

Each of the four towboats have the capacity for 10,400 gallons of fuel, 4,359 gallons of potable water and 9,500 gallons of ballast water, along with providing a maximum 7'-9" working draft. Each vessel is outfitted with three (3) crew staterooms housing 6 crewmen, 1 ½ baths and a full galley arrangement. •

## Milestones

### 5 Years

David Amaro  
Vincent Centanni  
Austin Cina  
Damien Drouant  
Ketelby Franklin  
Gary Helmer  
Jason Meyers  
John Paske  
Michael Patterson  
Gavin Simoneaux  
David Tubre

### 10 Years

Jeffery Crawford  
Scott Doll  
David Fultz  
Patrick Hill  
Craig Jackson  
Michael LeBlanc  
Brad Milford  
Matt Powell  
Stanley Stewart

### 15 Years

Jeffery Adams  
Michael Gegenheimer  
Justin O'Laughlin

### 20 Years

Lee Campo  
Jeremy Claverie  
Christopher John  
Mark Millican  
Tommy Sanderlin  
Robert Trahan

### 40 Years

Frank Altobello  
Mark St. Germain



# Milestones

## New Hires

Welcome to the Cooper Group of Companies!

- Russell Dorin, Loss Control Director  
Cooper Marine and Timberlands
- Shaun Harris, Loss Control Director  
Cooper Consolidated
- Blaine Petite, Environmental Compliance Director  
Cooper Consolidated

## Promotions

Congratulations to the following employees on their recent promotions!

- Robbie Wilkerson  
Pilot  
Cooper Marine and Timberlands
- Austin Nicholson  
Pilot  
Cooper Marine and Timberlands
- Kelly Kulakowski  
Vice President  
The Cooper Group of Companies
- Viki Wortham  
Vice President  
The Cooper Group of Companies
- Matt Powell  
Vice President  
The Cooper Group of Companies
- Nick Burke  
Assistant Vice President  
The Cooper Group of Companies
- Jonathan McMillian, Crane Operator  
Cooper Marine and Timberlands
- Xavier Haywood, Crane Operator  
Cooper Marine and Timberlands
- Chris Odom, Material Handler Operator  
Cooper Marine and Timberlands

## Births



Tiffany Spivey, CSA, welcomed son Chipper Lee Spivey on January 31.

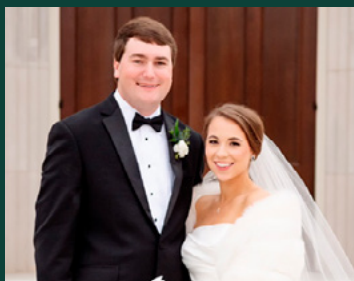


Kayla Thomson, C/PA, welcomed Helen Eloise on March 4.

## Weddings



The son of Penny Burney, Cooper/Ports America, Cameron Cornelius married Madeline Evans on January 8.



Cooper Marine and Timberlands' Richard Pipkins married Allie Parker on January 8.

Crescent Towing's Zack Calvin has been known to add some holiday cheer to the Crescent Towing sign in New Orleans. This year his Easter decorations caught the eye of the New Orleans Police Department bicycle patrol, who had to stop for a quick photo op. Great job, Zack!





# Milestones

On January 11, the team at Crescent Towing – Mobile celebrated retired captain Joe Tucker's 87th birthday at the BLUEGILL. Joining Captain Tucker were his son Captain Ronnie Walker and grandson Captain R.J. Walker, both of whom work for Crescent Towing – Mobile. Unable to join due to work was Joe's other son Captain Chris Walker, also an employee of Crescent Towing – Mobile.



*Pictured l-r: Cody Denny, Tadd Willcutt, Captain Ronnie Walker, Captain Joe Tucker (Seated), Captain RJ Walker, Travis Stringfellow*

The Alabama Kidney Foundation held its annual Kidney Walk and Celebration on March 19 at UMS-Wright Preparatory School's Ervin S. Cooper Stadium. The event is a fundraiser dedicated to helping local kidney patients in need. Among the participants at this year's event was The Cooper Group's Laurie Hasley, Susan Bates, and Terri Doherty.



## Submit Your Milestones

Do you know a new hire, promotion, or other milestone to announce? Send them to Thomas Smith, Director, Corporate Communications: [thomas.smith@coopertsmith.com](mailto:thomas.smith@coopertsmith.com)



College football fans across the Cooper Group cheer passionately for their respective teams and Frank Altobello, Dispatcher at Crescent Towing New Orleans, is no exception. Being the good sport that he is, Frank is seen below wearing an LSU jersey at work as a result of his losing a friendly bet after his favorite team, Notre Dame, lost (another) bowl game this year.

Crescent Towing was a proud sponsor of the inaugural Women in Maritime Operations (WIMOs) Golf Tournament held in New Orleans at Bayou Oaks Golf Course on March 16.



*Pictured (l-r): Lizben Chen, customer; Phil Katz; Emily Fortier; Dana Asevaldo; Heather Lech; Ben Morvant; Keith Kettenring*

Cooper/Ports America and Schroder Marine Services celebrated 30 years of partnership at the Cooper Farm on March 24.



*Pictured (l-r): Dave Morgan, Ricky Raven, Jurgen Schroder, Chris Lewis, Penny Burney, Gerard Hill, Karl Schroder, Don Johnson, Kristofer Schroder*